



# ROYAL WOLF PRODUCT CATALOGUE



# TABLE OF CONTENTS

Company Overview.....	3	Portable Toilet & Shower Building.....	21	20ft Pop Up Shop.....	36
<b>General Storage</b>		First Aid Room.....	22	Outdoor Room.....	37
Mini Cube Shipping Container.....	4	Change Room.....	23	Workshops.....	38
10ft High Cube Pallet Wide Container.....	5	<b>Hazardous + Dangerous Goods</b>		<b>Modifications</b>	
20ft General Purpose & High Cube.....	6	Hazardous & Dangerous Goods Storage Container.....	24	Modifications Overview.....	39
40ft General Purpose & High Cube.....	7	<b>Accommodation Units</b>		Training Facilities.....	40
20ft Open Side Container.....	8	Self-Contained Accommodation Container.....	26	Switch Room.....	41
Used Shipping Container.....	9	3-6 Person Accommodation Unit.....	27	<b>Intermodal &amp; Freight</b>	
<b>Refrigerated Containers</b>		<b>Mining &amp; Defence</b>		20ft, 40ft & 48ft Cube Saver.....	42
Event Refrigeration Container.....	10	Mobile Camp.....	28	20ft Side Door.....	43
Refrigerated Cold Storage Container.....	12	Blast Resistant Building.....	29	40ft & 48ft Curtainside.....	44
Non Operating Refrigerated Container.....	14	Explosives Magazine Container.....	30	20ft & 40ft Transiflats.....	45
<b>Building &amp; Construction</b>		Kitchen.....	31	20ft Bulk Standard & Smooth Wall.....	46
Building and Construction Combination.....	15	Custom Modules.....	32	24ft & 25ft Curtainside Heavy Duty.....	47
Sound Wall.....	16	<b>Events &amp; Retail</b>		Removals.....	48
Hoardings/Gantries.....	17	Event Kiosk.....	33	Container Relocations.....	49
Platform.....	18	<b>Design Ready Products</b>		Accessories.....	50
Site Office.....	19	10ft Mini Pop Up Shop.....	35		
Lunch Room.....	20				



## COMPANY OVERVIEW

With over 34 facilities located throughout Australia and New Zealand, Royal Wolf is proud to be Australasia's largest container provider. We specialise in the hire, sale and modification of new and refurbished shipping containers. Royal Wolf has over 20 years of experience and a commitment to providing superior customer service. We offer a wide range of shipping container and portable building products to suit your every need.

When dealing with Royal Wolf, you can be confident you're dealing with a professional team who understand the shipping container industry and are committed to finding the perfect solution for you.

Royal Wolf's dedication to product development and innovation has resulted in an extensive container product range for sale, with many of our products now the industry standard for their application. Our product range continually expands as our customers turn to us to assist in creating solutions to suit their individual needs. We can customise our shipping containers to create a tailor made solution to meet your requirements.

As Australasia's leading supplier of shipping containers, Royal Wolf provide quality products and services to over 20,000 businesses and individuals each year. The key to the cost effectiveness of a container is its portability and strength, even after considerable modifications. Royal Wolf's clients are choosing shipping containers as a flexible solution to portable storage needs and are reaping the rewards of the container's long life.



Royal Wolf were easy to work with, all the information was on the website, responded to phone messages promptly, were easy to deal with and nothing was a fuss.

- Gary Martin



# MINI CUBE SHIPPING CONTAINER

## OVERVIEW

Royal Wolf's Minicube is a portable shipping container unit that provides strong and secure portable storage, ideal for use as a storeroom, garden shed or worksite storage, amongst a number of other applications.

At just 2.3m by 2.3m, Royal Wolf's 8ft Minicube shipping containers, are less than half the size of a standard shipping container enabling them to fit in tight spaces with a small footprint.

Some minicubes include vents top and bottom of side walls and feature an internal emergency door release.



## DIMENSIONS

### External

LENGTH	2.30M
WIDTH	2.30M
HEIGHT	2.25M
WEIGHT	950KG

### Internal

LENGTH	2.14M
WIDTH	2.14M
HEIGHT	2.07M

## 10FT HIGH CUBE PALLET WIDE CONTAINER

### OVERVIEW

Royal Wolf's 10ft shipping containers offer an extra 30cm height and 6cm width than a standard storage container, providing a storage container option for those with limited space. Whilst the height is ideal for larger items, the extra width provides just enough room to fit two Australian standard pallets side by side on the floor.

Royal Wolf's new shipping containers have been shipped to Australia containing cargo - in order to reduce shipping costs - and often referred to as "one trip". They may arrive with slight scratches, scuff-marks or minor dents. Our one trip containers can be certified for International Shipping or Domestic Rail travel at no additional charge.



### DIMENSIONS

#### External

LENGTH	2.99M
WIDTH	2.44M
HEIGHT	2.90M
WEIGHT	1,450KG

#### Internal

LENGTH	2.84M
WIDTH	2.39M
HEIGHT	2.71M



# 20FT GENERAL PURPOSE AND HIGH CUBE

## OVERVIEW

Royal Wolf's 20ft shipping containers are strong and secure, New and premium used containers are wind, water and vermin proof, ensuring your items are kept in premium conditions and are portable allowing for relocation of your container whenever needed.

Ideal for storing personal effects, business documents, sporting equipment, tools, machinery and just about anything else, Royal Wolf can provide the answer to all of your storage needs.

## DIMENSIONS

### 20ft General Purpose - External

LENGTH	6.06M
WIDTH	2.44M
HEIGHT	2.59M
WEIGHT	2,220KG
CUBIC CAPACITY	33.2M <sup>3</sup>

### 20ft High Cube - External

LENGTH	6.06M
WIDTH	2.44M
HEIGHT	2.90M
WEIGHT	2,410KG
CUBIC CAPACITY	37.41M <sup>3</sup>

### 20ft General Purpose - Internal

LENGTH	5.90M
WIDTH	2.35M
HEIGHT	2.39M

### 20ft High Cube - Internal

LENGTH	5.90M
WIDTH	2.35M
HEIGHT	2.70M



## 40FT GENERAL PURPOSE AND HIGH CUBE

### OVERVIEW

Royal Wolf's 40ft shipping containers are extremely durable and secure and resistant to wind, water and vermin. These attributes make a Royal Wolf 40ft shipping container an ideal product for strong and safe storage.

### DIMENSIONS

#### 40ft General Purpose - External

LENGTH	12.19M
WIDTH	2.44M
HEIGHT	2.59M
WEIGHT	3,660KG
CUBIC CAPACITY	67.7M <sup>3</sup>

#### 40ft High Cube - External

LENGTH	12.19M
WIDTH	2.44M
HEIGHT	2.90M
WEIGHT	3,890KG
CUBIC CAPACITY	76.4M <sup>3</sup>

#### 40ft General Purpose - Internal

LENGTH	12.03M
WIDTH	2.35M
HEIGHT	2.39M

#### 40ft High Cube - Internal

LENGTH	12.03M
WIDTH	2.35M
HEIGHT	2.70M



# 20FT OPEN SIDE CONTAINER

## OVERVIEW

The open-side shipping container doors come with tie-backs to prevent accidental closings. Our quality locks and fittings also give you an extra layer of security. They can be moved with fork lifts, so you can load them just like you would a standard shipping container.

With doors running down the long side of the container, open side containers offer superior access to stored goods. The doors simply fold out of the way in use and then return into their closed position for secure storage.

Royal Wolf's open sided shipping container can be used to hold shop-front displays or as information or sales kiosks at trade shows or festivals. Some business owners even choose to modify an open side container and make it one of their primary retail spaces.



## DIMENSIONS

### Open Side Container - External

LENGTH	6.06M
WIDTH	2.44M
HEIGHT	2.59M
WEIGHT	3,180KG

### Open Side Container - Internal

LENGTH	5.90M
WIDTH	2.29M
HEIGHT	2.30M





# USED SHIPPING CONTAINER

## OVERVIEW

Royal Wolf offer a great range of used and second hand shipping containers that are available for purchase. These containers are available in a variety of sizes and grades allowing customers to purchase the right type of container for their intended purpose.

### Used Shipping Container Grades

#### Premium

- Wind and water tight
- Minimal wear and tear
- Structurally sound
- Vermin proof

#### Standard

- Wind and water tight
- Structurally sound
- May have obvious repair work
- Good condition

#### Economy

- Wind and water tight. Weatherproof
- No structural integrity guaranteed
- Surface rust
- Fair or poor quality
- Unpainted
- Obvious wear and tear

#### AS IS

- No structural integrity guaranteed
- Surface rust
- Fair or poor quality
- Unpainted
- Obvious wear and tear



# REFRIGERATION CONTAINER WITH EZI ENTA DOOR

## OVERVIEW

Royal Wolf offers the latest in purpose built refrigeration units for any market that requires onsite, temperature controlled storage.

Our refrigerated shipping containers for the events market are 20ft (6m) long and lined with food-grade stainless steel. The containers can be used to refrigerate or freeze foods and beverages, given their overall temperature range capabilities of between +20° C to -20° C. For maximum usability, the containers' interiors are fitted with efficient internal lighting and drainage systems.

These refrigerated units provide many new advantages and set a benchmark for the industry - precise temperature control, one of the lowest power consumption available in the market and state of the art Carrier technology, as well as the reliability and versatility that customers have come to expect from Royal Wolf.

Our standard of refrigerated containers offers the lowest power consumption available in the market and state of the art Carrier technology.



# REFRIGERATION CONTAINER WITH EZI ENTA DOOR

## DIMENSIONS

### 10ft Refrigerated Container: - Internal

LENGTH	2.28M
WIDTH	2.29M
HEIGHT	2.59M

### 10ft Refrigerated Container: - External

LENGTH	2.99M
WIDTH	2.44M
HEIGHT	2.89M

### 20ft Refrigerated Container: - Internal

LENGTH	5.19M
WIDTH	2.29M
HEIGHT	2.59M

### 20ft Refrigerated Container: - External

LENGTH	6.06M
WIDTH	2.24M
HEIGHT	2.90M

SIZE	POWER	VOLTS	AMPS	PLUG
20FT	SINGLE PHASE	240	15	3 PIN
20FT	THREE PHASE	500	32	PDL 4 PIN STRAIGHT
40FT	THREE PHASE	500	32	PDL 4 PIN STRAIGHT
40FT HC	THREE PHASE	500	32	PDL 4 PIN STRAIGHT

### TEMP RANGES:

SINGLE PHASE CHILLERS (0 -20 DEGREES)  
THREE PHASE CHILLERS (-25 -20 DEGREES)



# REFRIGERATED COLD STORAGE CONTAINER

## OVERVIEW

Royal Wolf has a range of Refrigerated Containers available to fulfill all of your cold storage needs.

Our Cool Rooms and Refrigerated Cold Storage shipping containers are inspected prior to delivery and are available with 24/7 breakdown service in metro areas (approximately 50km). Installation can be arranged with a qualified refrigeration mechanic to ensure reliability, safety and convenience.

Royal Wolf Cold Storage and Refrigeration Storage products are thermostatically controlled, maintained to the highest standard and are suitable for the storage of food and drinks as well as a number of other applications. Optional features range from alarms, digital displays and Ezi Enta doors (single door enabling easy access as it eliminates the need to open the double doors).



# REFRIGERATED COLD STORAGE CONTAINER

## DIMENSIONS

### 20ft Refrigerated Container:

- Internal

LENGTH	5.45M
WIDTH	2.27M
HEIGHT	2.27M

### 20ft Pallet Wide Refrigerated Container:

- Internal

LENGTH	5.45M
WIDTH	2.39M
HEIGHT	2.57M

### 40ft Refrigerated Container:

- Internal

LENGTH	11.59M
WIDTH	2.29M
HEIGHT	2.59M

### 20ft Refrigerated Container:

- External

LENGTH	2.84M
WIDTH	2.37M
HEIGHT	2.56M

### 20ft Pallet Wide Refrigerated Container:

- External

LENGTH	6.06M
WIDTH	2.50M
HEIGHT	2.90M

### 40ft Refrigerated Container:

- External

LENGTH	12.19M
WIDTH	2.44M
HEIGHT	2.90M

SIZE	POWER	VOLTS	AMPS	PLUG
20FT	SINGLE PHASE	240	15	3 PIN
20FT	THREE PHASE	500	32	PDL 4 PIN STRAIGHT
40FT	THREE PHASE	500	32	PDL 4 PIN STRAIGHT
40FT HC	THREE PHASE	500	32	PDL 4 PIN STRAIGHT

TEMP RANGES:

SINGLE PHASE CHILLERS (0 -20 DEGREES)

THREE PHASE CHILLERS (-25 -20 DEGREES)

# NON OPERATING REFRIGERATED CONTAINER

## OVERVIEW

When Royal Wolf refrigerated containers become non operational as cool room or freezer solutions, we re-purpose them as Non Operating Refrigerated containers.

With 100mm of insulation, a stainless steel interior and a fluted aluminum floor, Non Operating Refrigerated Containers are extremely strong and durable.

They are an excellent safe and secure storage solution for anything that requires storage in a moderately temperature controlled environment as the insulation will maintain a cooler and more consistent temperature.

Store your documents, furniture or wine in a Non Operating Refrigerated Container for greater protection and less exposure to heat.



## DIMENSIONS

### 20ft Non Operating: - Internal

LENGTH	5.45M
WIDTH	2.29M
HEIGHT	2.27M

### 20ft Non Operating: - External

LENGTH	6.06M
WIDTH	2.44M
HEIGHT	2.59M

### 40ft Non Operating: - Internal

LENGTH	11.59M
WIDTH	2.29M
HEIGHT	2.25M

### 40ft Non Operating: - External

LENGTH	12.19M
WIDTH	2.44M
HEIGHT	2.59M



# BUILDING AND CONSTRUCTION COMBINATION

## OVERVIEW

Royal Wolf's Builders' Combo provides a total work site solution for on-site storage, office space, ablutions and site facilities, particularly where space is tight.

Constructed within a 10ft high cube container, the Builders Combo incorporates a single toilet and a separate space that can be used for storage or an office area. It comes with a folding plan table and desk to provide the ideal area for reviewing plans and managing paperwork inside, protected from the weather.

As a fully stackable solution, the Builders' Combo can be integrated with a wide range of other containerised solutions such as offices, lunchrooms, amenities blocks, first aid rooms and more, to make the most of a restricted footprint. It can even be stacked up to a height of 40ft with the innovative Soundwall to minimise noise disruptions to surrounding areas.

Ideal for building sites, roadworks, civil and earthworks projects, storage for trades, events, workshops and more, Royal Wolf's Builders' Combo is an easy to transport, highly durable and flexible total work site solution.



# SOUNDWALL

## OVERVIEW

Working within the confines of suburban areas, construction and event organisers often turn to Royal Wolf to provide containerised sound barriers with designated access points, stacked up to 40- feet high, in order to create an event which satisfies customers whilst providing the minimum amount of noise disruption to the surrounding area.

Royal Wolf containers also have the ability to be stacked in a wide variety of formations allowing a tailor-made solution for music festivals and other highly populated events seeking crowd control.

In 2017, Royal Wolf engineered a Soundwall for the Australian Tennis Open:

Royal Wolf was required to provide a 9 metre high x 80 metre long Sound Wall on a sloping surface with a curved shape to match the landscape. This required a level roof to enable signage to be attached. This facility was critical to Tennis Australia's objective of delivering an outstanding spectator experience as it was to house a 12 metre LED screen providing life size player vision for the audience.





# HOARDINGS / GANTRIES

## OVERVIEW

Royal Wolf's container hoardings and gantries are available for long or short-term hire and provide solid overhead protection on building and construction sites. These units are designed to ensure the safety of workers and pedestrians and provide effective 10kPa rated protection from construction materials, debris and other falling objects. The integrated modular units with floor, walls and roof guaranteeing an extremely impact resistant structure.

## CERTIFICATIONS

Download or available on request

- [10ft Hoarding Design](#)
- [20ft Hoarding Design](#)
- [40ft Hoarding Design](#)
- [20ft Gantry Certificate](#)

## DIMENSIONS

10ft Hoarding: - External

LENGTH	2.99M
WIDTH	2.44M
HEIGHT	2.90M

The hoardings and gantries are amongst the safest on the market with impressive resistance from vehicular impact, slip resistant flooring and unrivaled protection for pedestrians and workers. Royal Wolf's container hoardings and gantries are designed to compliment our portable building and construction product range, including site offices, toilets and showers. The containerised portable buildings can be stacked on top to provide a complete construction work site solution.

Hire Royal Wolf's hoardings and gantries for all your building and construction projects.

Royal Wolf has a team of engineers who can assist with the planning and layout of the construction site to ensure a unique and practical solution.

20ft Hoarding: - External

LENGTH	6.06M
WIDTH	2.44M
HEIGHT	2.90M



# PLATFORM

## OVERVIEW

Royal Wolf's platforms are an engineered base suitable for use in a variety of applications. They can be used as a stacked multi-level walkway system between site amenities, overhead protection rated to 10kPa for falling objects and offer a practical overhead storage base for those tight footprint work sites.

Outside of the construction industry, platforms are used as bridge flats for culvert or creek crossings and for transporting odd shaped or larger cargo than the dimensions available in general purpose or open top containers.

## CERTIFICATIONS

Download or available on request

- [20ft CSS Platform Certificate](#)

## DIMENSIONS

### 20ft Platform - External

LENGTH	6.06M
WIDTH	2.44M
HEIGHT	0.24M
TARE	1,600KG



# SITE OFFICE

## OVERVIEW

Site office solutions from Royal Wolf provide comfortable and secure site offices to suit all size construction sites.

A site office comes complete with entry door, window, air conditioning, lighting and power. Royal Wolf can even supply desks and chairs, notice boards, white boards, filing cabinets and fire extinguishers to supply a site office that is ready for immediate use on delivery.

## DIMENSIONS

### 20ft Site Office: - Internal

LENGTH	5.49M
WIDTH	2.27M
HEIGHT	2.60M

### 20ft Site Office: - External

LENGTH	6.06M
WIDTH	2.44M
HEIGHT	2.90M

For projects that require larger facilities, Royal Wolf can offer site offices in a range of sizes and configurations. By combining the site office with portable toilet blocks, lunch rooms, change rooms, first aid room and hoardings, a site office can become part of a total work site solution.

## CERTIFICATIONS

Download or available on request

- [20ft Cabin Certificate](#)
- [40ft Cabin Certificate](#)

### 40ft Site Office: - Internal

LENGTH	12.14M
WIDTH	2.37M
HEIGHT	2.71M

### 40ft Site Office: - External

LENGTH	12.19M
WIDTH	2.44M
HEIGHT	2.99M



# LUNCH ROOM

## OVERVIEW

Royal Wolf lunchrooms come fitted with lights and power, tables and chairs, sink and bench, hot water urn, microwave, fridge, air conditioning, pie warmer, notice board and fire extinguisher are all available to create the lunch room environment that best suits your needs. Hire a quality lunch room that is strong and secure.

Royal Wolf lunch rooms are ideal for long or short term projects and when combined with site offices, change rooms, toilet & shower blocks, first aid rooms and hoardings form part of a total solution to work site amenity needs.



## DIMENSIONS

### 20ft Lunch Room: - Internal

LENGTH	5.9M
WIDTH	2.27M
HEIGHT	2.60M

### 20ft Lunch Room: - External

LENGTH	6.06M
WIDTH	2.44M
HEIGHT	2.90M

### 40ft Lunch Room: - Internal

LENGTH	11.96M
WIDTH	2.23M
HEIGHT	2.58M

### 40ft Lunch Room: - External

LENGTH	12.19M
WIDTH	2.44M
HEIGHT	2.90M



# PORTABLE TOILET AND SHOWER BUILDING

## OVERVIEW

Royal Wolf offers portable toilet hire with optional shower configurations allowing companies and events to provide their employees and patrons with amenities of the highest standard.

Ablutions are equipped with a sewer connection, Royal Wolf portable toilets and shower buildings offer a hygienic solution for any location.

Portable toilet hire options can range from a 6m (20ft) unit with 2 portable toilets and basin, through to a 12m (40ft) container unit consisting of several portable toilets and showers.

Whether you need portable toilet hire for a one day event or a portable bathroom for long term construction project, Royal Wolf can assist with your portable toilet and shower block needs.

## DIMENSIONS

### 20ft Ablution: - External

LENGTH	6.06M
WIDTH	2.44M
HEIGHT	2.90M

### 20ft Ablution: - Internal

LENGTH	5.90M
WIDTH	2.27M
HEIGHT	2.60M



# FIRST AID ROOM

## OVERVIEW

First aid rooms form a necessary part of any construction site or event. Royal Wolf offer first aid rooms that can be hired individually or as part of a total solution to storage and portable building needs.

Equipped with lighting and power, reverse cycle air conditioning, bed, sink, desk, chair, fridge and hot water urn, a first aid room from Royal Wolf offers a simple and easy solution.

A standard first aid room is 6m in length however Royal Wolf has the ability to create first aid rooms in accordance with individual needs.



## DIMENSIONS

### 20ft First Aid - External

LENGTH	6.06M
WIDTH	2.44M
HEIGHT	2.90M

### 20ft First Aid - Internal

LENGTH	5.90M
WIDTH	2.27M
HEIGHT	2.60M

# CHANGE ROOM

## OVERVIEW

Change rooms are an important part of any construction site and with a portable change room from Royal Wolf you can be sure you are hiring a quality product.

As with all Royal Wolf portable buildings, the change rooms are constructed from shipping containers making them extremely durable and secure. Royal Wolf can arrange delivery of your portable change room ensuring your site is set up and functioning with minimal fuss.

## DIMENSIONS

20ft Change Room: - External

LENGTH	6.06M
WIDTH	2.44M
HEIGHT	2.90M

20ft Change Room: - Internal

LENGTH	5.90M
WIDTH	2.27M
HEIGHT	2.60M



# HAZARDOUS & DANGEROUS GOODS STORAGE CONTAINER

## OVERVIEW

Class 3 Dangerous and hazardous goods containers are available in three convenient sizes - 8ft (2.3m), 10ft Pallet Wide (3m) and 20ft (6m) and are fully compliant Australian Standard 1940-2017\*. (\*Certificates of compliance can be supplied upon request.)

These Class 3 containers are equipped with an internal door release, ventilation, bunded floor and a lockable stainless steel valve in the bund wall, ensuring safety is the number one priority.

Royal Wolf's Class 3 Hazardous Goods and Liquids Storage containers are the ideal storage units for paint, thinners, oils, diesel, chemicals, class 3 flammables and any other potentially dangerous substance.

In addition to providing solutions for hazardous goods, liquids and chemical storage, Royal Wolf's containers are a valuable storage source for non-hazardous liquids where there are risks associated with spills and slips.





# HAZARDOUS & DANGEROUS GOODS STORAGE CONTAINER

## DIMENSIONS

Size and weight of 8ft Class 3: - External

LENGTH	2.30M
WIDTH	2.30M
HEIGHT	2.25M
WEIGHT	1,320KG

Size and weight of 8ft Class 3: - Internal

LENGTH	2.14M
WIDTH	2.24M
HEIGHT	1.80M*

\*Clearance through doors.



Size and weight of 10ft Class 3: - External

LENGTH	2.99M
WIDTH	2.44M
HEIGHT	2.90M
WEIGHT	1,678KG

Size and weight of 10ft Class 3: - Internal

LENGTH	2.84M
WIDTH	2.37M
HEIGHT	2.45M*



Size and weight of 20ft Class 3: - External

LENGTH	6.06M
WIDTH	2.44M
HEIGHT	2.90M
WEIGHT	3,350KG

Size and weight of 20ft Class 3: - Internal

LENGTH	5.90M
WIDTH	2.29M
HEIGHT	2.48*



# SELF-CONTAINED ACCOMMODATION CONTAINER

## OVERVIEW

Strong durable and comfortable, Royal Wolf's accommodation units are available in either a 20ft or 40ft size range and can be combined to create larger buildings as required. The portability of the container means that your building can be easily transported to wherever it is required whilst the classic shape makes the units easily stackable to create multi-storey solutions.

Features Include:

- Kitchenette with counter top and overhead cupboards
- Ensuite with shower, basin, toilet and extractor fan
- Bar fridge and hot water system
- King single bed with innerspring mattress and storage drawers
- Air conditioning unit and flatscreen TV/DVD
- Lockable glass sliding door with security screen
- Wardrobe, desk, chair, bookcase and smoke detector
- Flooring , electrical, internal and external lighting
- Available options include double bed or bunk conversion



## 3-6 PERSON ACCOMMODATION UNIT

### OVERVIEW

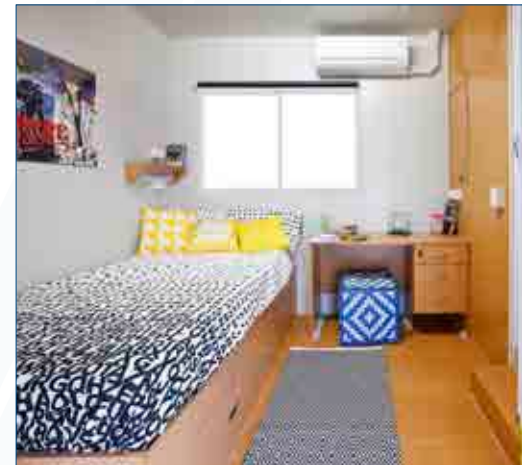
Royal Wolf's 3 - 6 person accommodation units are secure, comfortable and quiet and ideal for worker or rural accommodation, emergency or student accommodation or even residential or mining accommodation camps. The units are designed for ease of transport and therefore perfect for mobile accommodation or long term accommodation solution.

Royal Wolf's Sleeper Units Provide:

- Three individual ensuited and air conditioned rooms
- Dimensions: 40ft (12.2m) x 10ft (3m) x 9ft6in (2.9m)
- Insulated with mineral wool insulation bondor style
- Plug capacity: Single phase 32 amp, 30 amp demand
- Can be converted to a 6 person unit with double bed or bunk on request

Each Sleeper has the following standard inclusions:

- Personal access door
- Window with security screen and blackout blind
- Desk and chair
- Two clothes storage spaces
- 200 litre hot water system
- 3.5kw split system air conditioner
- Ensuite with toilet, shower and hand basin
- Flat screen TV/DVD
- 120 litre bar fridge with freezer compartment
- Coaxial and data connectivity



# MOBILE CAMP

## OVERVIEW

Royal Wolf's high strength platforms create a unique strong, secure, comfortable and quiet building for your staff and contractors. The container is designed for ease of transport and therefore perfect for a mobile camp.

With split system air conditioning and insulation in all camp units, this containerised solution offers a high level of comfort no matter the location or weather.

All camps comply with the AS3000-3001 Electrical Installation and AS3500 for Plumbing. Appliances and fittings are Australian approved and are selected for their local support and reliability.

Our Mobile Camps are built to be moved on a regular basis, deployed and disassembled rapidly using a 'plug and play' process. Only power, water and sewerage need to be connected for each module to become operational.

Royal Wolf will work with you to develop and design a solution for your specific requirements.



# BLAST RESISTANT BUILDING

## OVERVIEW

Royal Wolf offers an extensive range of modular blast resistant buildings that are cost effective and provide complete flexibility. The containerised blast resistant rooms enhance worker safety within hazardous environments. These buildings provide a safe zone for employees and equipment within the process areas in the event of leaked vapour ignition.

The blast resistant buildings have several general uses on site including switch rooms, operator shelters, office blocks, ablution facilities, security posts, change and locker rooms, kitchens, meeting rooms, document control rooms and safe havens.

Royal Wolf blast resistant buildings are available as standard 8ft or 10ft wide and can be joined together to form larger modules. This application is ideal for workplaces requiring large office blocks, cribs and ablutions.

Blast resistant buildings are fitted with split system or ducted air conditioning. They have integrated ventilation shut down systems with an optional gas detection system. They also have the option of manual, security controlled or fully automated door system to ensure the appropriate solution for the sites needs.



# EXPLOSIVES MAGAZINE

## OVERVIEW

Meeting the requirements of AS2187.1-1998, Royal Wolf's relocatable explosive magazines offer ventilated storage, the security of 5mm thick steel walls that are fully insulated and timber lined and a 10mm thick door with key and manual locking devices.

The all steel external construction of the explosive magazines offers impact and cyclonic protection. Royal Wolf offers support in certification, footing design and detail to assist in installation. The relocatable explosive magazines (REMs) are fully ISO compliant for easy transport.

Explosive magazines are specialised equipment and as such are handled by Royal Wolf's Project Division. This team are trained to assist with explosive magazine enquiries for customers Australia wide.



## OVERVIEW

Royal Wolf's transportable, commercial kitchens offer a convenient, modular solution that is ideal for use in restaurants or venues requiring additional cooking areas, or during renovations. Remote mining camps, events and community projects.

At 12m long, the containerised commercial kitchen is available in either 2.4m or 3m widths and is capable of catering for up to 200 people. The unit is fully insulated and comes complete with top-of-the-range Australian approved and supported appliances, extensive stainless steel benching and commercial grade lighting.

Royal Wolf commercial kitchens comply with the Australian Standard for the Design, Construction and Fit-out of Food Premises (AS4674-2004). This not only guarantees legal compliance but also ensures a safe and efficient environment for hygienic food preparation.

Royal Wolf kitchens offer a flexible solution for individual needs or can form part of a total portable building solution to create a mobile camp.



## CUSTOM MODULES

### OVERVIEW

Royal Wolf has extensive design , development and manufacturing capability supported by an extensive experience network of project partners to enhance our capability.

We have experience delivering Operational, Training, Testing and specialist modules, directly to the ADF and its prime contractor network.

Containers are the ideal equipment to customise defence modules. They are very flexible in terms of design as they allow many wall partitions and entry points, the installation of large ladders, security gates, mounted additional platforms and more.





# KIOSK

## OVERVIEW

The Royal Wolf kiosk is the smart way to bring that extra dimension to your sales, and customer service business. The kiosk containers are ideal as they are portable and available for short or long term hire.

Standard features include full length servery, power, lighting, air conditioning and each unit can be individually painted to accommodate corporate signage. Safe, secure, durable and weatherproof, the kiosk is available with flexible hire and sale options.

Kiosks are available in 10ft and 20ft sizes and can be utilised at exhibitions and as retail outlets to sell products or to facilitate services. Ideal at music festivals and product launches for mobile bars and catering.



# KIOSK

## DIMENSIONS

### 10ft Kiosk:

- Internal

LENGTH	2.74M
WIDTH	2.28M
HEIGHT	2.60M

### 10ft Kiosk:

- External

LENGTH	2.99M
WIDTH	2.44M
HEIGHT	2.90M
WEIGHT	2,000KG

### 20ft Kiosk:

- Internal

LENGTH	5.83M
WIDTH	2.20M
HEIGHT	2.60M

### 20ft Kiosk:

- External

LENGTH	6.06M
WIDTH	2.44M
HEIGHT	2.90M
WEIGHT	2,860KG



# 10FT MINI POP-UP CONTAINER SHOP

## OVERVIEW

Royal Wolf's 10ft Mini Pop Up Container Shops offer the perfect combination of portability and security for your business.

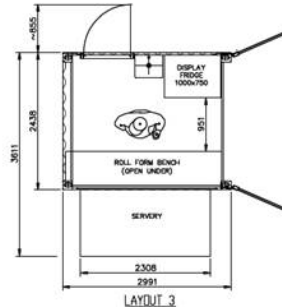
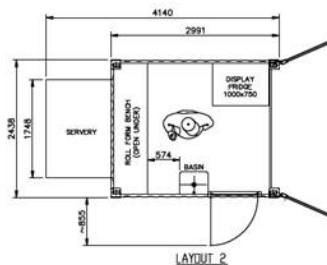
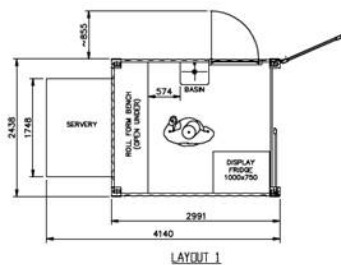
Create a delightful coffee shop, space-saving information booth, funky juice bar or cool ice cream shop with a Royal Wolf 10ft Mini Pop Up Container Shop!

Stylishly designed with a generous servery, durable steel checker plate flooring, roll form servery bench and flexible storage areas, this compact container is the ideal small space solution to accommodate your growing business.

Highly portable and secure, it is even perfect for a branded franchise outlet, canteen, tuckshop, ticketing office and so much more.



## LAYOUT OPTIONS



\*Display fridge is not included



# 20FT POP-UP CONTAINER SHOP

## OVERVIEW

Create a trendy café, funky salon, vibrant wine bar or stylish store with a Royal Wolf 20ft Pop Up Container Store!

Conveniently designed with security doors, laminated bench top, power, lighting, sink unit and so much more, this is the low-cost, highly flexible way to accommodate your growing business.

The Royal Wolf 20ft Pop Up Container Shop is even perfect for a sporting or school canteen, coffee shop or bakery.



## AVAILABLE IN STARTER PACK MODEL AND BASE MODEL



**STARTER PACK**



**BASE MODEL**



# OUTDOOR ROOM

## OVERVIEW

Do you need space outdoors for a pop-up retail store, event kiosk, tradeshow display, restaurant, café or on-site sales office?

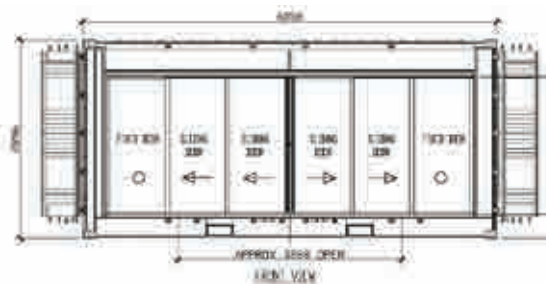
A Royal Wolf Outdoor Room is the latest trend in creative space solutions. Completely customisable, it is the quick, low cost way to provide portable space to accommodate your business.

Weather-proof and secure, Outdoor Rooms are even perfect for a home office, art or music studio, teenage retreat or simply a room to chill out and entertain around the pool.

## LAYOUT



TOP VIEW



FRONT VIEW



# WORKSHOPS

## OVERVIEW

If you have special requirements to build a workshop that it is not only tailored for you, but it is portable, flexible and secure then Royal Wolf will be able to help.

Customising a 20ft or 40ft container, is a cost effective way to create a mobile workshop that will suit either a building site or a home business.

Our engineering and production teams can modify a standard container and transform it into an ideal working space featuring windows, access doors, customised shelving for tools/equipment providing electrical installation, air conditioning and other features as required.



## MODIFICATIONS OVERVIEW

### RETAIL SOLUTIONS

Retail and hospitality industries are always looking for creative ways to showcase new products or services. Royal Wolf's pop up retail solutions suit a variety of applications. Adding a facade or company logo transforms the container into a contemporary container solution.

Royal Wolf shipping containers can be delivered directly to your nominated site, allowing you to adapt to retail demands.

Our in-house engineering and production teams can customise designs to meet your brand or event requirements.



### PORTABLE SHOWCASE

Strong, portable and easy to relocate, Royal Wolf's containerised solutions are ideal for impactful event and tradeshow marketing.

Create a dynamic event experience by showcasing your products and services in a customised 10ft, 20ft or 40ft container. Add your logo, branding and colours to stand out from the crowd. Include internal fittings, shelving, dressing rooms or presentation spaces for the perfect blend of functionality and style. Whatever your dream design, our in-house team of engineers and draftsmen have the expertise to turn it into reality.



### EVENT ACTIVATIONS

Royal Wolf's strong and durable containers can be completed transformed into exciting spaces for community events, public performances, sporting competitions, entertainment shows and so much more!

Fully engineered by our expert team, these amazing spaces can be multi-level, sandblasted, illuminated and fully branded solutions, perfectly designed for the contours, conditions and footprint of their location.

We have decades of experience in designing and developing unique platforms for events and shows.



# TRAINING FACILITIES

## OVERVIEW

Royal Wolf has extensive experience in the design, development, manufacture and installation of training and simulator modules, both for defence, Firefighting, confined space training and many simulator applications

Shipping containers are the ideal equipment to create low cost and durable training facilities. If required, we can customise your training container with air conditioning and access to electrical and plumbing systems and additional accessories.

Our training storage containers are relocatable, durable, secure and modified by our dedicated in house engineering and production teams which guarantee the highest quality and efficient solution for your specific requirements.





# SWITCH ROOM

## OVERVIEW

Understanding our customer's unique requirements is the key to Royal Wolf's experienced design and engineering team being able to deliver a successful outcome.

We have built a variety of switch solutions, primarily dependent on the customer's unique requirements, including the size of the working site; the electrical loading; the site layout and terrain; local weather conditions; the requirement for temperature control; the ability to easily and safely relocate and the accessories required.

Working with our customers we guarantee practicality and functionality, such as emergency push bar doors, fire systems, ceiling cable trays, penetration and gland plates, climate control systems and other add-ons.



# 20FT, 40FT & 48FT CUBE SAVER

## OVERVIEW

The CUBE SAVER™ container features a unique vertical track and deck beam system that allows for individual pallets to be double-stacked at any height. The recessed vertical deck beam tracks maximise the cubic capacity of the container enabling the separation of sensitive freight there by minimising freight damage. The CUBE SAVER™ was developed specifically for the sensitive freight market.

Features Include:

- Available in 20ft, 40ft and 48ft sizes
- Easily adjustable deck beams
- Providing two levels of loading
- Maximises cubic capacity
- Available in various heights including 9ft 10"



CONTAINER	DIMENSIONS (mm)						WEIGHT (kg)			CAPACITY
	EXTERNAL			INTERNAL			Max. Gross	Tare	Max. Payload	
	Length	Width	Height	Length	Width	Height				(M³)
20ft CUBE SAVER™	6058	2500	2997	5898	2422	2802	30480	2680	27800	40
40ft CUBE SAVER™	12192	2500	2997	12032	2422	2802	34000	4440	29650	81.7
48ft CUBE SAVER™	14630	2500	2997	14470	2422	2802	32000	5650	26350	98.2

# 20FT SIDE DOOR

## OVERVIEW

Royal Wolf manufactures a range of 20ft side door containers which are designed for side loading access of palletised and over dimensional freight.

The design features bi-fold doors which provide full side access for the loading and unloading of all types of freight.

Optional Features Include:

- Vented, non-vented and partially vented doors
- Slimline doors
- Adjustable mezzanine decks
- Load binders

CONTAINER	DIMENSIONS (mm)						WEIGHT (kg)			CAPACITY
	EXTERNAL			INTERNAL			Max. Gross	Tare	Max. Payload	
	Length	Width	Height	Length	Width	Height				(M <sup>3</sup> )
20ft x 2500 x 9ft 6"	6100	2502	2896	6002	2397	2643	30480	3820	26660	38
20ft x 2500 x 9ft 10"	6100	2502	2997	6002	2397	2744	30480	3910	26570	39.5
20ft x 2500 x 10' Ventilated	6100	2522	3050	6002	2422	2786	30480	4250	26230	40.5
20ft x 2500 x 9ft 10" Ventilated	6100	2502	2997	6002	2397	2704	30480	4320	26160	38.9
Mezzanine Deck	5992	2380	154	N/A	N/A	N/A	N/A	1150	10500	N/A



# 40FT & 48FT CURTAINSIDE

## OVERVIEW

The Royal Wolf 40ft heavy weight and 48ft light weight and heavy weight curtainside containers are the units of choice for leading transport companies. They are fully intermodal, meaning they can be top lifted and are suitable for loading a wide range of freight.

The side access which curtain sides offer, allow ease of loading and unloading of both palletised and overlength cargo.

Optional Features Include:

- Load binder winches and straps

- Fixed or movable roof supports
- Recessed tie down points
- Mezzanine decks
- Recessed curtain buckles to reduce maintenance costs
- Suspended gate system and sliding load binders
- Tool box, alloy tensioners
- Customised branded curtains
- Corrugated roof for added strength

CONTAINER	DIMENSIONS (mm)						WEIGHT (kg)			CAPACITY
	EXTERNAL			INTERNAL			Max. Gross	Tare	Payload	
	Length	Width	Height	Length	Width	Height				M3
40ft x 2500 x 9'6" HD Curtainside	12192	2502	2896	11887	2446*	2497	35000	6510	28490	72.5
40ft x 2500 x 9'10" HD Curtainside	12192	2502	2997	11887	2446*	2598	35000	6560	28440	75.5
48ft x 2500 x 9'10" Lightweight Double Stack Curtainside	14746	2500	3000				32000	8680	23320	92.1
48ft x 2500 x 9'10" HD Single Stack Curtainside	14746	2500	3000	1247/12018/ 1247	1199/2444 /1199	2644	32000	7770	24230	92.9
48ft x 2500 x 9'10" HD Double Stack Curtainside	14746	2500	3000	1245/3570/ 4760/3570/1245	1195/1195/2444/ 1195/1195	2596	35000	9390	25610	90

\* Internal width between roof supports 2376mm



# 20FT & 40FT TRANSIFLATS

## OVERVIEW

Royal Wolf design, test and manufacture transiflats to suit your operational requirements. Transiflats are intermodal so that they can be used to carry freight on road, rail or sea. Side end gates can be customised depending on the freight profile.

Transiflats can be nested when empty therefore reducing transport costs.

Optional Features Include:

- Checker plate steel floor
- Customised side/end gates
- Full length tie rails
- Load binders
- Recessed tool box



CONTAINER	DIMENSIONS (mm)						WEIGHT (kg)		
	EXTERNAL			INTERNAL			MAX. GROSS	TARE	PAYLOAD
	LENGTH	WIDTH	HEIGHT	LENGTH	WIDTH	HEIGHT			
20ft Transiflat	6058	2500	236	6058	2500	N/A	30480	2200	28280
40ft x 2500 Transiflat	12230	2500	250	12230	2500	N/A	32000	3900	28100

# 20FT BULK STANDARD & SMOOTH WALL

## OVERVIEW

Royal Wolf heavy duty dry bulk and smooth wall containers are ideal for transporting a wide range of bulk product and general purpose cargo.

Smooth wall designs are excellent for food grade and paper products. They are designed to accommodate two Australian CHEP pallets loaded side by side internally.

Optional Features Include:

- Various height options
- Roof loading hatches
- Letterbox and door discharge hatches
- Fit for purpose paint systems
- Fixtures to accommodate liner bags
- Design and manufacture of other access such as hoppers

CONTAINER	DIMENSIONS (mm)						WEIGHT (kg)			CAPACITY
	EXTERNAL			INTERNAL			Max. Gross	Tare	Max. Payload	(M <sup>3</sup> )
	Length	Width	Height	Length	Width	Height				
20ft x 2438 x 9ft 6" Bulk (Guillotine Hatch)	6058	2438	2896	5889	2352	2614	30480	3460	27020	36.2
20ft x 2500 x 9ft 6" Bulk (Front Hatches)	6058	2500	2896	5886	2395	2704	30480	3300	27180	38.1
20ft x 2500 x 9ft 6" Bulk (Smooth wall)	6058	2500	2896	5893	2400	2665	35000	3190	31810	37.7



# 24FT & 25FT CURTAINSIDE HEAVY DUTY

## OVERVIEW

Royal Wolf has a wide range of pallet wide curtainside container units capable of transporting 12 CHEP pallets on the floor of the containers. These units can be supplied with mezzanine decks for double stacking of pallets thus increasing capacity to 24 CHEP pallets.

Available in either 24ft or 25ft size range, they feature a range of options including: Hanging gates, extra ventilation, heat reflective roof coating and flush curtain buckles in the bottom side rail to reduce damage when loaded into well wagons.

The 25ft curtainside container with mezzanine deck is fully intermodal, meaning it can be lifted loaded from the 25ft top lift position. It is suitable for loading pallets up to 1100mm high above and below the deck. It is designed to suit any pallet dimensions, and is fitted with suspended gate systems and load tested curtains.



CONTAINER	DIMENSIONS (mm)						WEIGHT (kg)			CAPACITY (M <sup>3</sup> )
	EXTERNAL			INTERNAL			Max. Gross	Tare	Max. Payload	
	Length	Width	Height	Length	Width	Height				
24ft x 2500 x 9ft 10" Curtainside	7315	2502	2997	7211	2446	2697	24890	3890	21000	47.5
25ft x 2500 x 9ft 6" Curtainside	7600	2500	2896	7458	2440	2595	24000	4100	19900	45.9

# REMOVALS

## OVERVIEW

Royal Wolf is the leading container supplier to the Australian removals industry. With our years experience and product innovations designed to suit the specific needs of removalists, Royal Wolf is the number one choice in containers.

Royal Wolf offers an unrivaled capacity to allow the transfer of containers and associated costs between branches and agents, and facilitate one way hire and interstate repositioning. This is made possible by our web-based Container Tracking System, powered by software developed by Moveware.

The strategic positioning of Royal Wolf's depots and agents enables us to provide quality containers throughout Australia for short term and long term hire, modifications and sales.

By continually purchasing new containers over the years, Royal Wolf have developed a fleet replacement program to ensure we have the youngest fleet in the container hire market.





# CONTAINER RELOCATIONS

## OVERVIEW

Royal Wolf are able to offer logistic solutions to our Customers in both Australia and New Zealand. Our advanced Industry knowledge and extensive networks in Intermodal enables us to negotiate the challenges of remote relocations.

With over 34 Customer Service centres across Australasia, we are able to tailor container hire on a one-way basis to suit your needs.

We offer a complete logistics solution with a wide range of quality containers available nationally through our comprehensive coverage of depot locations throughout Australia and New Zealand.

We consistently meet delivery deadlines, working onsite with other operators where necessary to provide a fully integrated service backed up with a national call centre for convenient support and service.



## ACCESSORIES



**WHIRLYBIRD**

Royal Wolf can install a whirly bird on your shipping container to provide ventilation. The whirly bird will also provide some cooling to the shipping container for areas where electricity and air conditioning is not an option.



**AIR CONDITIONING**

Royal Wolf can install a range of air conditioners into the shipping containers and portable buildings to ensure maximum comfort for the occupants. Our air conditioner accessories have been specially designed in retractable frames making transportation easy.



**VENTS**

Minimise odours and increase natural air flow with the installation of vents. Royal Wolf can install small vents or larger steel louvered vents on any wall of a shipping container. Vents can also assist in reducing the temperature in hot shipping containers.



**LOCK BOX**

A lock box is a device that covers the padlock on the shipping container door. It provides extra security from vandals and protection for the padlock from the weather.



**SHELVING**

Accessorising your shipping container with shelving allows easy storage for items including business documents, archive boxes, tools and personal assets. Royal Wolf can design and construct shelving to your exact requirements



**PLUMBING**

Plumbing can create sinks, toilets and showers to transform your shipping container into a portable building.

# ACCESSORIES



Electricity allows the provision of lighting and ensuring your shipping container can be transformed into a practical environment for your needs.



Padlocks are a necessity on almost all shipping containers. Installed to prevent the doors from opening, padlocks help prevent thieves and vandals from accessing your possessions.



By choosing to install a door as an accessory on a shipping container, customers can easily access their unit and eliminate the need to open the heavy double doors at the end of the shipping container. Royal Wolf can install a variety of different doors to suit individual needs including roller doors (ideal for vehicle access or canteen serving points), single and double side doors and sliding doors.



Royal Wolf have a variety of window options available for use in shipping containers and portable buildings allowing natural lighting, ventilation and a clear line of sight. Many windows are manufactured with sliding glass panels. Security is maintained when the container is unattended with a steel covering flap that simply pushes outwards when the window is open. Other window options include security bars.



Painting and sign writing a shipping container allows the opportunity to promote your brand and products - its like having your own portable billboard. Before any painting is completed, Royal Wolf will grind back any surface rust and repair any damage to the shipping container. Painting the shipping container not only enhances its appearance but it also prolongs the life span of the unit.



Ramps are ideal for minimising tripping accidents in products that have a large amount of pedestrian traffic. They are also useful for shipping containers that have products on wheels being moved in and out eg. wheelbarrows, cars, trolleys and bikes. Ramps are available as fixed or removable and can be located at any door opening.



**YOU CAN DO ANYTHING IN A ROYAL WOLF**

**1300 651 700**

**[royalwolf.com.au](http://royalwolf.com.au)**